

CERTIFICATE OF LOCATION OF GOVERNMENT CORNER

NORTH QUARTER Corner of Section 1, Township 107N, Range 39W

5th Principal Meridian, State of Minnesota, County of MURRAY

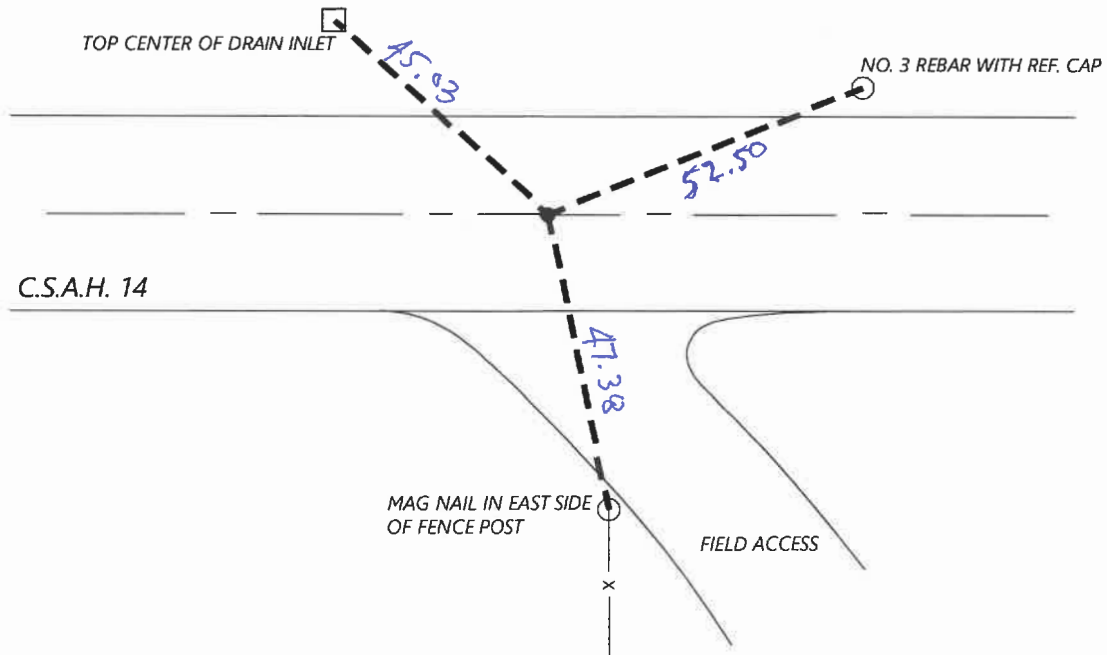
At the corner location shown on the sketch:

On 11/04/2020 found a 6" X 6" CONCRETE MONUMENT WITH SCRIBED "X" ON TOP. 0.3FT BELOW GRADE.
DATE

left monument as found lowered monument removed monument (explain)

On 12/16/2020 placed a NO. 4 REBAR WITH CAP LS 45874 ON NORTH SIDE OF MONUMENT. DOWN 0.4FT.
DATE

SKETCH OF REFERENCE TIES



Statement of evidence for this corner location is on back of this page.

I hereby certify that this document was researched and prepared by me or under my direct supervision and that I am a licensed Land Surveyor under the laws of the State of Minnesota.

Signature [Handwritten Signature]

Date 6/16/2021 License No. 45874

Title:

- Land Surveyor Professional Engineer
- County Surveyor County Engineer

OFFICE OF THE COUNTY RECORDER

County of Murray

I hereby certify that this document was filed in the Co.

Recorder's office at _____ .M. on the _____ day of _____ .A.D. 20

County Recorder [Handwritten Signature] by JUN 22 2021, Deputy

DOCUMENT NO. _____

Statement of Evidence:

North Quarter Corner of Section 1, Township 107 North, Range 39 West, 5th Principal Meridian, Murray County, Minnesota.

No GLO Notes.

Undated, Survey record for Section 36 does not indicate anything at the corner, but does note a distance of 2637.50ft to the Southwest section corner and 2645.5ft to the Southeast section corner.

1899 October, Survey record for Section 1 shows a government mound and stake at the corner.

1940 Survey record for Section 1 shows a concrete stone at the corner.

<i>Tack in corner post</i>	<i>S</i>	<i>33.6ft</i>
<i>Tack in gate post</i>	<i>SW</i>	<i>39.2ft</i>

2020 December, Westwood Professional Services excavated with a backhoe and found a 6x6" concrete stone at a depth of 0.3ft below grade. I set a $\frac{1}{2}$ " rebar with cap LS 45874 on it's north side to aid in future recovery, and set reference ties.

Analysis of the recovered data, field evidence and survey measurements, indicates that the monument found is the correct perpetuation of this corner. For additional information concerning this corner please contact Westwood Professional Services.